

BOARD OF SUPERVISORS

MADISON COUNTY, MISSISSIPPI

Department of Engineering
Dan Gaillet, P.E., County Engineer

3137 South Liberty Street, Canton, MS 39046
Office (601) 790-2525 FAX (601) 859-3430

MEMORANDUM

May 2, 2018

To: Sheila Jones, Supervisor, District I
Trey Baxter, Supervisor, District II
Gerald Steen, Supervisor, District III
David Bishop, Supervisor, District IV
Paul Griffin, Supervisor, District V

From: Dan Gaillet, P.E. *DG*
County Engineer

Re: Sink Hole
134 W. Elbridge Way
Harvey Crossing Subdivision

Multiple sink holes have formed at this address due to the failure of the storm water system and suspected utilities boring through storm water pipes.

The first location is within a drainage easement on the left side of the property. The Engineering Department suspects that the pipe has collapsed which is causing water to back up on W. Elbridge Way and creating a dangerous sink hole. However, a full determination will be made after authorization is granted to work on private property.

The second location is outside ROW and drainage easement but it is suspected that utilities have been bore through this pipe. It is the recommendation of the Engineering Department that the Board approve a temporary construction easement for further investigation by Madison County. If it is determined that a utility company is at fault, the Engineering Department will look to the utility company for full repair.

Therefore, it is in the best interest of the County and the public's health, safety and welfare to make the repairs, due to:

- The pipe failure that is restricting flow off the roadway; and
- A dangerous sink hole has formed due to the failure.

SHEILA JONES
District One

TREY BAXTER
District Two

GERALD STEEN
District Three

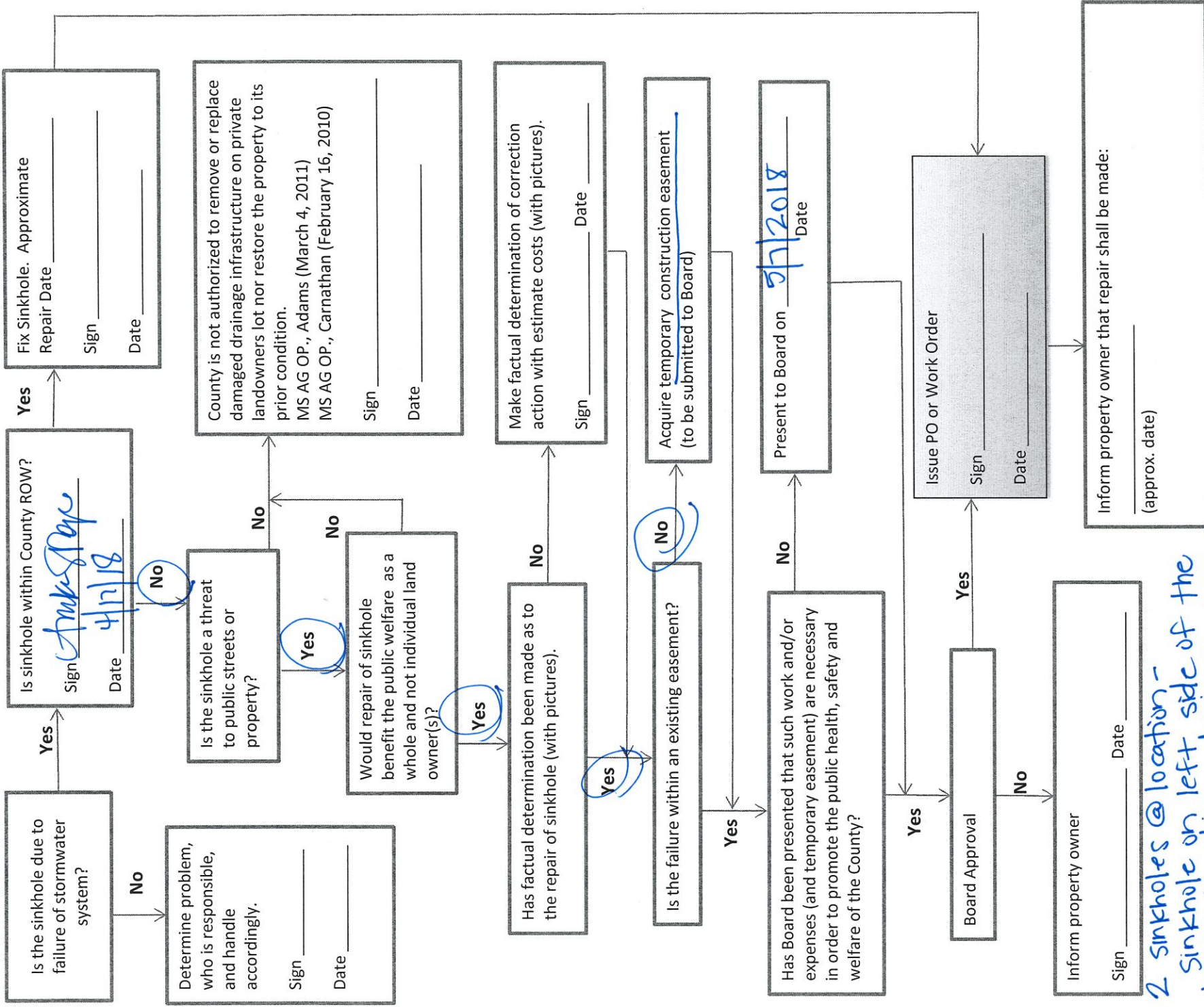
DAVID BISHOP
District Four

PAUL GRIFFIN
District Five

SINKHOLE FLOW CHART

LOCATION: 134 W Elbridge Way

DATE: 4/17/18



* 2 sinkholes @ location - Sinkhole on left side of the house is w/in a drainage easement. The 2nd sink-hole is on the right side of the house with no easement.

1741 W. Elmwood Way

LF
SIDE

Basement - 1/2

124 W BURRIDGE WAY

RT SIDE

NO ENCUMBR

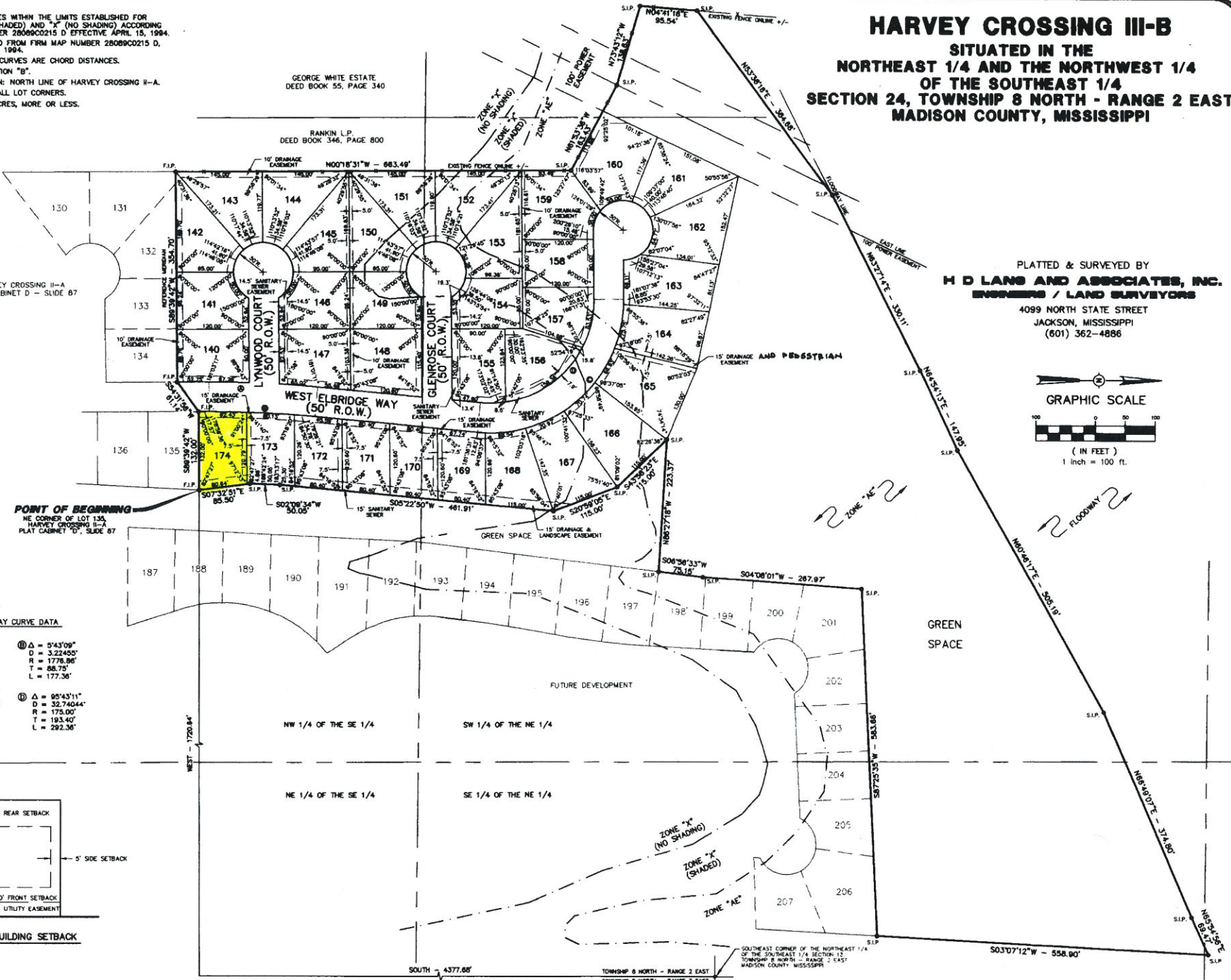
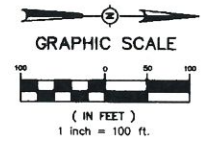


- NOTES:
1. THIS SUBDIVISION LIES WITHIN THE LIMITS ESTABLISHED FOR ZONES "AE", "X" (SHADED) AND "X" (NO SHADING) ACCORDING TO FIRM MAP NUMBER 28089C0215 D EFFECTIVE APRIL 15, 1994.
 2. FLOOD LINES SCALED FROM FIRM MAP NUMBER 28089C0215 D, EFFECTIVE APRIL 15, 1994.
 3. DIMENSIONS ALONG CURVES ARE CHORD DISTANCES.
 4. SURVEY CLASSIFICATION "B".
 5. REFERENCE MERIDIAN: NORTH LINE OF HARVEY CROSSING II-A.
 6. IRON PINS SET AT ALL LOT CORNERS.
 7. AREA = 24.525 ACRES, MORE OR LESS.

HARVEY CROSSING III-B

SITUATED IN THE
NORTHEAST 1/4 AND THE NORTHWEST 1/4
OF THE SOUTHEAST 1/4
SECTION 24, TOWNSHIP 8 NORTH - RANGE 2 EAST
MADISON COUNTY, MISSISSIPPI

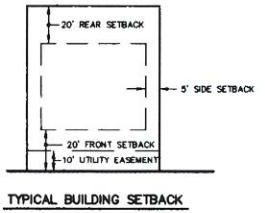
PLATTED & SURVEYED BY
H D LANG AND ASSOCIATES, INC.
ENGINEERS / LAND SURVEYORS
4099 NORTH STATE STREET
JACKSON, MISSISSIPPI
(601) 362-4886



POINT OF BEGINNING
NE CORNER OF LOT 135,
HARVEY CROSSING II-A
PLAT CABINET "D", SLIDE 87

RIGHT OF WAY CURVE DATA

Ⓐ Δ = 5°43'09"	Ⓒ Δ = 5°43'09"
D = 3,136.30'	D = 3,224.55'
R = 1826.96'	R = 1776.96'
T = 91.25'	T = 86.75'
L = 182.35'	L = 177.36'
Ⓒ Δ = 95°43'11"	Ⓓ Δ = 95°43'11"
D = 25,468.79'	D = 32,740.44'
R = 225.00'	R = 175.00'
T = 248.66'	T = 193.40'
L = 375.69'	L = 292.36'

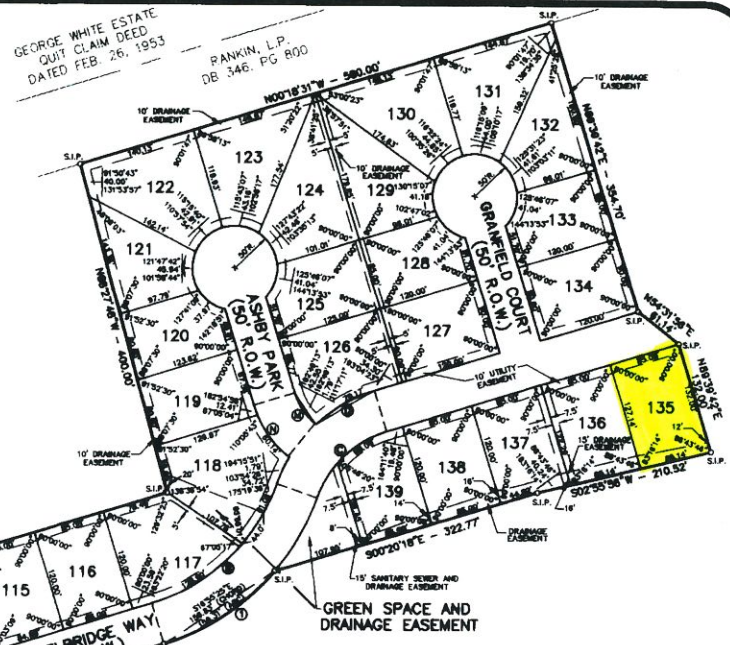


D-87 2964

HARVEY CROSSING II-A

SITUATED IN THE
SOUTHEAST 1/4 OF SECTION 24,
TOWNSHIP 8 NORTH - RANGE 2 EAST
MADISON COUNTY, MISSISSIPPI

- NOTES:**
1. THIS SUBDIVISION LIES WITHIN THE LIMITS ESTABLISHED FOR ZONE "A" (UNSHADED) ACCORDING TO FIRM MAP NUMBER 28099C0215 D EFFECTIVE APRIL 15, 1994.
 2. DIMENSIONS ALONG CURVES ARE CHORD DISTANCES.
 3. SURVEY CLASSIFICATION "B".
 4. REFERENCE MERIDIAN: WEST LINE OF HARVEY CROSSING I.
 5. IRON PINS SET AT ALL LOT CORNERS.
 6. AREA = 21.339 ACRES, MORE OR LESS.

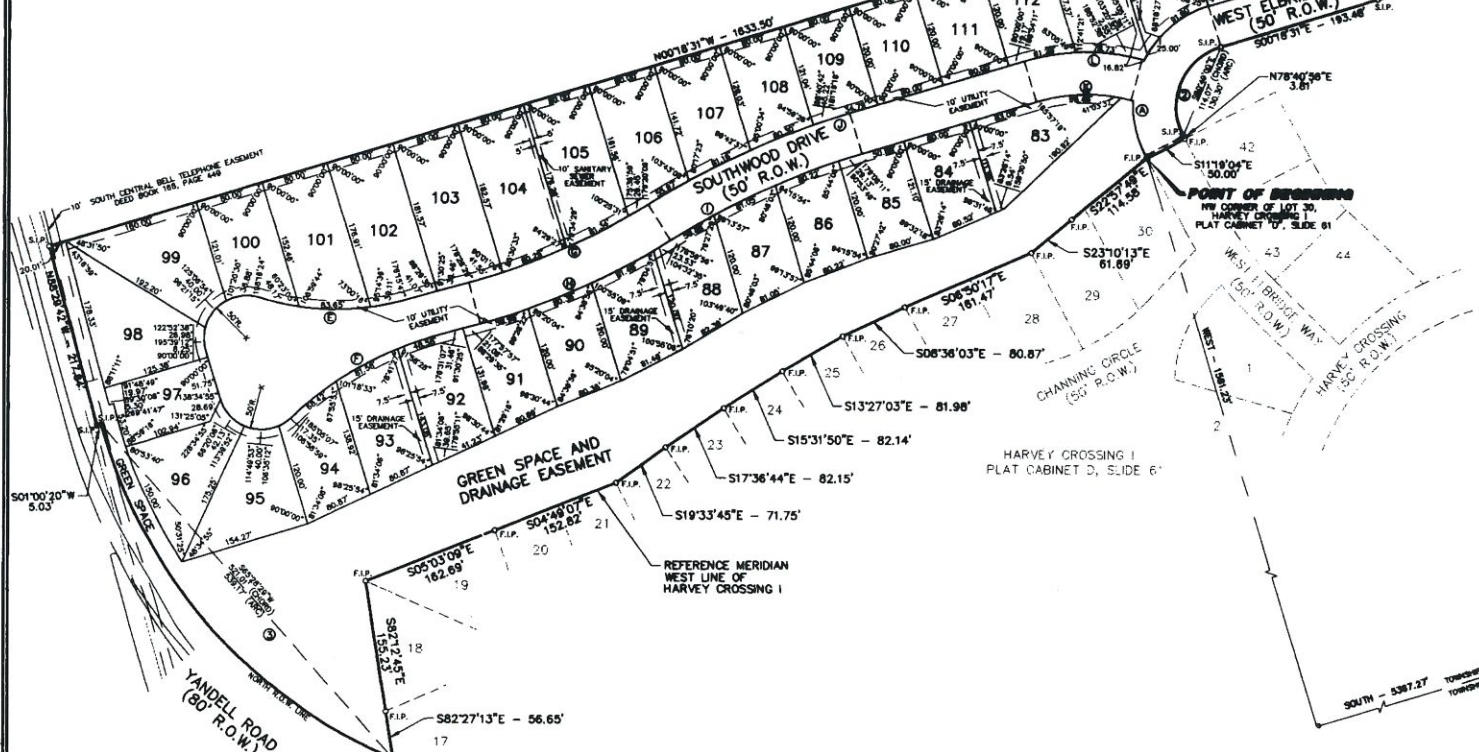


RIGHT OF WAY CURVE DATA

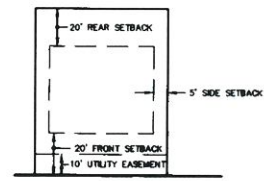
① Δ = 101°00'57" D = 48.24184' R = 123.90' T = 150.35' L = 218.45'	② Δ = 53°59'24" D = 25.43891' R = 228.23' T = 114.74' L = 212.24'	③ Δ = 53°57'37" D = 45.83697' R = 125.00' T = 83.84' L = 117.72'	④ Δ = 53°57'37" D = 32.74008' R = 175.00' T = 89.00' L = 184.81'	⑤ Δ = 32°42'48" D = 18.09881' R = 300.00' T = 88.00' L = 171.29'
⑥ Δ = 28°28'54" D = 14.32308' R = 400.00' T = 101.52' L = 198.84'	⑦ Δ = 18°51'42" D = 7.54167' R = 780.41' T = 115.87' L = 229.67'	⑧ Δ = 18°51'42" D = 8.98972' R = 830.41' T = 123.08' L = 244.38'	⑨ Δ = 19°21'17" D = 9.18187' R = 930.33' T = 123.41' L = 248.32'	⑩ Δ = 19°21'17" D = 3.84444' R = 800.33' T = 132.15' L = 282.72'
⑪ Δ = 31°34'19" D = 27.96000' R = 294.92' T = 57.93' L = 112.92'	⑫ Δ = 31°34'19" D = 22.47583' R = 254.92' T = 72.07' L = 140.47'	⑬ Δ = 34°21'34" D = 79.53750' R = 72.04' T = 22.27' L = 43.20'	⑭ Δ = 34°21'34" D = 48.84872' R = 122.04' T = 37.73' L = 73.18'	

BOUNDARY CURVE DATA

① Δ = 53°59'24" D = 20.81722' R = 275.23' L = 259.38'	② Δ = 101°00'57" D = 77.52884' R = 73.90' L = 130.30'	③ Δ = 54°38'38" D = 8.80333' R = 598.92' L = 588.88'
--	--	---



PLATTED & SURVEYED BY
H D LANG AND ASSOCIATES, INC.
ENGINEERS / LAND SURVEYORS
4099 NORTH STATE STREET
JACKSON, MISSISSIPPI
(601) 362-4886

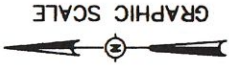


TYPICAL BUILDING SETBACK

SOUTHEAST CORNER OF THE NORTHEAST 1/4 OF THE SOUTHEAST 1/4 SECTION 13, TOWNSHIP 8 NORTH - RANGE 2 EAST MADISON COUNTY, MISSISSIPPI

**NORTHEAST 1/4 AND THE NORTHWEST 1/4
OF THE SOUTHEAST 1/4
SECTION 24, TOWNSHIP 8 NORTH - RANGE 2 EAST
MADISON COUNTY, MISSISSIPPI**

PLATTED & SURVEYED BY
H D LANG AND ASSOCIATES, INC.
ENGINEERS / LAND SURVEYORS
4099 NORTH STATE STREET
JACKSON, MISSISSIPPI
(601) 362-4886



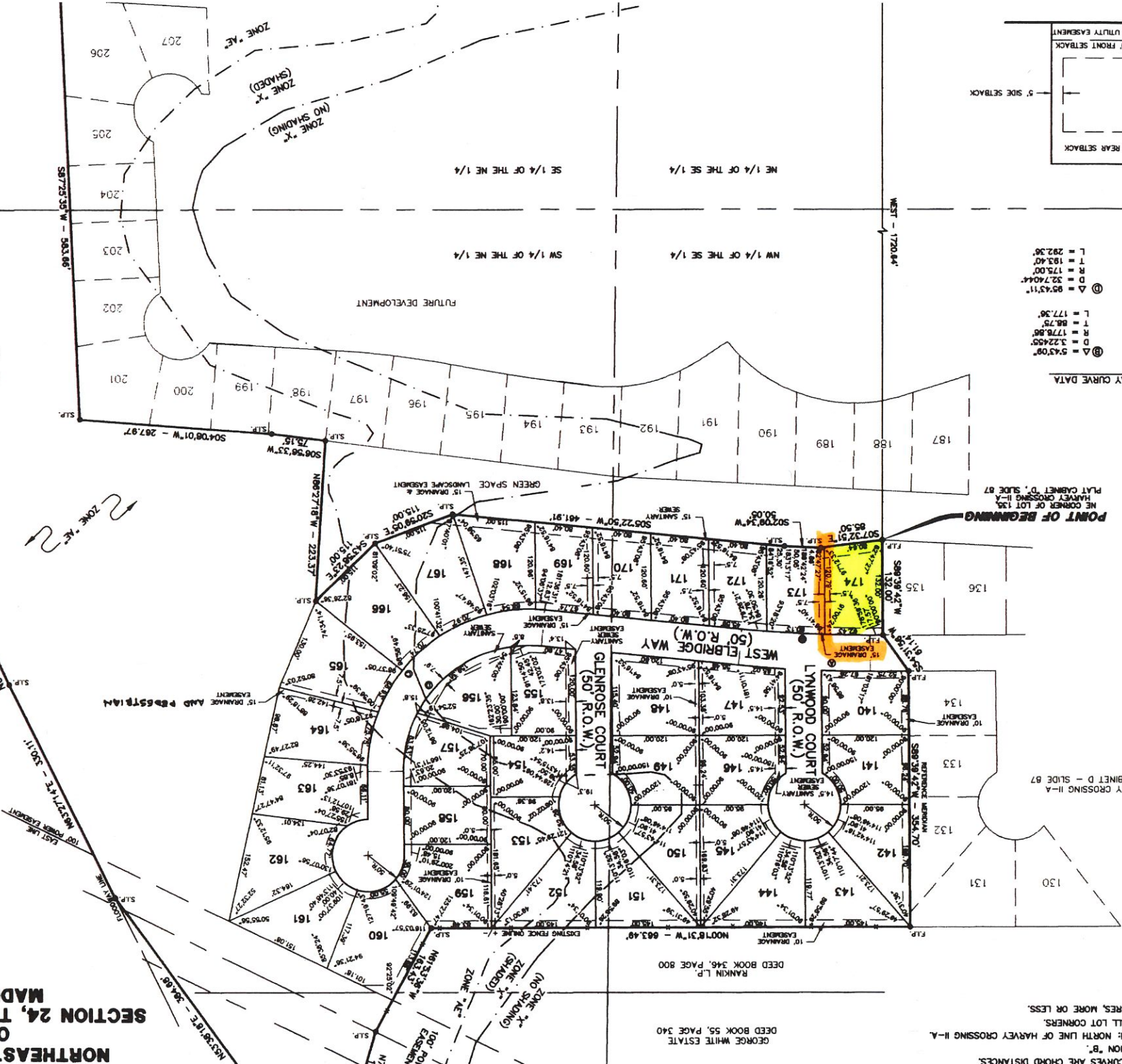
GRAPHIC SCALE
(IN FEET)
1 inch = 100 ft.



3. DIMENSIONS ALONG CURVES ARE CHORD DISTANCES.
4. SURVEY CLASSIFICATION "B".
5. REFERENCE MERIDIAN: NORTH LINE OF HARVEY CROSSING II-A.
6. IRON PINS SET AT ALL LOT CORNERS.
7. AREA = 24.525 ACRES, MORE OR LESS.

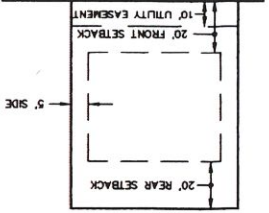
GEORGE WHITE ESTATE
DEED BOOK 55, PAGE 340

RANKIN L.P.
DEED BOOK 346, PAGE 800



RIGHT OF WAY CURVE DATA

① Δ = 543'08"	R = 1828.86'	T = 88.75'	L = 182.35'
② Δ = 543'08"	D = 3.13830'	R = 1778.86'	L = 177.36'
③ Δ = 9543'11"	D = 25.46478'	R = 175.00'	L = 175.00'
④ Δ = 9543'11"	D = 32.74044'	R = 193.40'	L = 292.36'
		T = 248.66'	L = 375.88'



POINT OF BEGINNING
NE CORNER OF LOT 134
HARVEY CROSSING II-A
PLAT CABINET D, SLIDE 87

PLAT CABINET D - SLIDE 87
REFERENCE MERIDIAN
N89°31'11\"

BOARD OF SUPERVISORS

MADISON COUNTY, MISSISSIPPI

Department of Engineering/Road Management
Dan Gaillet, P.E., County Engineer/ Road Manager

3137 South Liberty Street, Canton, MS 39046
Office (601) 855-5670 FAX (601) 859-5857

TEMPORARY CONSTRUCTION EASEMENT

This agreement, made this 17th day of April, 2018, between
Heather Williamson, parties of the first part and the Madison

County Engineering and Road Department grants a temporary construction easement to enter property at:

134 W Elbridge Way, Canton

for the purpose of: dumping waste dirt storm water repair other _____

removal of beaver dam due to said dam causing a road hazard and/or damage to the county road

Now, therefore, in consideration of the benefits accruing to said property, the parties of the first part hereby consent and agree that the Madison County Engineering and Road Department, its agents, employees and assigns may enter the above described property for the purpose of performing the work as described above and further expressly agree that the parties of the first part will assert no claim whatsoever, or any kind or type, against the Madison County Engineering and Road Department, its agents, employees or assigns by reason of performing said work.

IN TESTIMONY WHEREOF, witness the signatures of the parties this 18 day of
April, 2018.

PROPERTY OWNERS

Heather White
Party of the First Part

Ed Williamson
Party of the First Part

BY: _____
Madison County Engineering and
Road Department

SHEILA JONES TREY BAXTER GERALD STEEN DAVID BISHOP PAUL GRIFFIN
District One District Two District Three District Four District Five